



PAKALOLO[®] BOOTS


SAFETY FOOTWEAR



PAKALOLO BOOTS SAFETY FOOTWEAR range has been designed to perform in all your industrial applications, enabling you to find specific, quality, safety products to meet all your safety footwear requirements.

CATALOG

www.pakaloloboots.com

 @pakalolosafetyshoes

FEATURES / CHARACTERISTIC



Leather

Upper Material buffalo Leather International standard ISO 20345:2011



Steel Toe

Steel toecap offer protection Impact Resistance Of Toe Caps (EN) 12568:2010, 4.2.3, Energy Level: 200 Joules)



Slip Resistant

Design with Slip Resistant Outsole Material to reduce the risk of slips and falls in the workplace



Oil Resistant

Safety Engineered Outsole for Traction on Damp, Slippery and Oily Surfaces



Heat Resistant PU

Heat Resistant PU outsole to temperatures of 130°C Celcius



Heat Resistant Rubber

Heat Resistant RUBBER outsole to temperatures of 300°C Celcius

INDUSTRY KEY

- HM** HEAVY METAL
- MA** MANUFACTURING
- FP** FOOD PROCESSING
- FE** FARM & EQUESTRIAN
- CN** CONSTRUCTION
- MI** MINING
- OG** OIL & GAS
- GP** GENERAL PURPOSE



PAKALOLO[®] BOOTS

SAFETY FOOTWEAR

Also Available Here :



*prices are subject to change without prior notice

TECHNOLOGY that goes into PAKALOLO BOOTS

- ✓ Engineered to be the best all round available safety footwear.
- ✓ A trusted, quality safety brand with an established nation-wide distribution network & technical product support.
- ✓ Innovatively styled safety footwear, that offer phenomenal comfort & world-class safety.
- ✓ Manufactured in one of the worlds largest ISO-accredited Safety Footwear factories.
- ✓ Tested against & exceed the International Safety Standard ISO 9001 : 2015
- ✓ Designed in state of the art Testing & Research Laboratories, ensuring technologically advanced & superior safety products.
- ✓ Versatile Workboots for every industrial & work application.
- ✓ The essential combination of Quality, Safety & Styling - at work or on the move.
- ✓ PAKALOLO BOOTS safety footwear gives you "SAFE FEET"

PAKALOLO BOOTS safety footwear range has been designed to perform in all your industrial applications, enabling you to find specific, quality, safety products to meet all your safety footwear requirements.

OUTSOLE

RUBBER



- ✓ Heat resistant **RUBBER** outsole to temperatures of 300° Celcius.
- ✓ **RUBBER** outsole size available **36 - 46**.
- ✓ Excellent slip resistance.

PU



- ✓ Heat resistant **PU** outsole to temperatures of 130° Celcius.
- ✓ **PU** outsole size available **36 - 46**.
- ✓ Excellent slip resistance.

INSOLE

Removable dual - density EVA Molded and open cell foam footbed for outstanding cushion, comfort and longevity.

Air Hole
Keep Dry and Cool



Soft Texturing Surface
Feel soft & Comfort

Extra Soft
ULTRA EVA Molded

TECHNOLOGY & FUNCTION

INSOLE

Durable and comfortable woven fiber insole

COMFORT INSOLE

Dual density EVA, with soft texturing

LINING

Soft, breathable, anti microbial AMPA approved, ecological and recyclable SMARTEC

LINING

Supple, woven, bacteria treated comfort plus vamp lining

Genuine comfort flex strobel construction

COUNTER

Rugged thermoplastic molded counter

Soft Eva hinged strip that adds additional protection to the foot

COLLAR

Soft Cow Leather + 12.0mm high abrasion foam

STEEL TOECAP

Safety Toe meets EN-ISO-20345 2004 Standards

Toe and Counter Bumper Guards omit

OUTSOLE

Long wearing - Oil resistant Quick grip Rubber Outsole



PRODUCT & FEATURES

HI



SFR - 89993

SFU - 89993



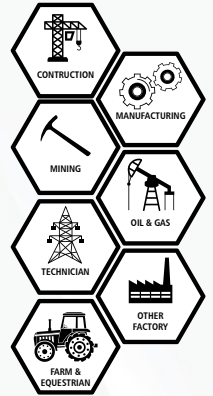
SFR - 89993

SFU - 89993

SPECIFICATIONS

COLORS	: BLACK / TAN	INLAYSOLE	: PU - PL PAKALOLO BOOTS RUBBER - PL PAKALOLO BOOTS
UPPER	: BUFFALO FULL GRAIN LEATHER	LINNING	: TEXTILE
INSOLE	: SMART INSOLE SOFT IU INJECTION	SAFETY TOECAP	: STEEL - IMPACT RESISTANT 200 JOULE
OUTSOLE	: POLY URETHANE / PU RUBBER		

SECTOR:



MID

SFR - 89901

SFU - 89901



SFR - 89903

SFU - 89903



SFR - 89905

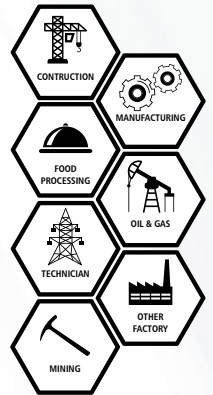
SFU - 89905



SPECIFICATIONS

COLORS	: BLACK	INLAYSOLE	: PU - PL PAKALOLO BOOTS RUBBER - PL PAKALOLO BOOTS
UPPER	: BUFFALO FULL GRAIN LEATHER	LINNING	: TEXTILE
INSOLE	: SMART INSOLE SOFT IU INJECTION	SAFETY TOECAP	: STEEL - IMPACT RESISTANT 200 JOULE
OUTSOLE	: POLY URETHANE / PU RUBBER		

SECTOR:



MAN LOW

SFR - 8901

SFU - 8901



SFR - 8903

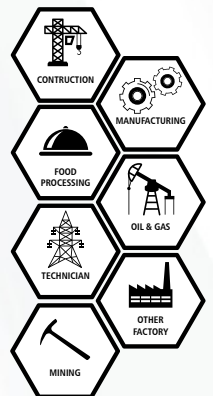
SFU - 8903



SPECIFICATIONS

COLORS	: BLACK	INLAYSOLE	: PU - PL PAKALOLO BOOTS RUBBER - PL PAKALOLO BOOTS
UPPER	: BUFFALO FULL GRAIN LEATHER	LINNING	: TEXTILE
INSOLE	: SMART INSOLE SOFT IU INJECTION	SAFETY TOECAP	: STEEL - IMPACT RESISTANT 200 JOULE
OUTSOLE	: POLY URETHANE / PU RUBBER		

SECTOR:



PRODUCT & FEATURES

SAFETY WOMEN

NEW
SW-21



NEW
SW-23



SPECIFICATIONS

- | | | | |
|---------|----------------------------------|---------------|--------------------------------------|
| COLORS | : BLACK | INLYSOLE | : PU - PL PAKALOLO BOOTS |
| UPPER | : BUFFALO FULL GRAIN LEATHER | LINNING | : TEXTILE |
| INSOLE | : SMART INSOLE SOFT IU INJECTION | SAFETY TOECAP | : STEEL - IMPACT RESISTANT 200 JOULE |
| OUTSOLE | : POLY URETHANE / PU | | |

SECTOR:



PREMIUM

NEW
BUP01



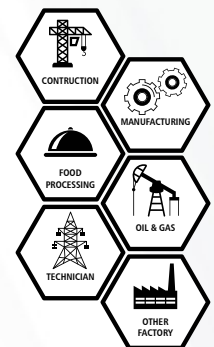
NEW
BUP01



SPECIFICATIONS

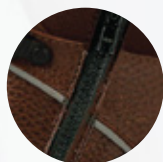
- | | | | |
|---------|--------------------------------------|---------------|--------------------------|
| COLORS | : BROWN / BLACK | INLYSOLE | : PU - PL PAKALOLO BOOTS |
| UPPER | : COW FULL GRAIN LEATHER+TEXTILE+TPR | LINNING | : TEXTILE |
| INSOLE | : SMART INSOLE SOFT IU INJECTION | SAFETY TOECAP | : COMPOSITE |
| OUTSOLE | : POLY URETHANE / PU | | |

SECTOR:



PREMIUM

NEW
BUP91



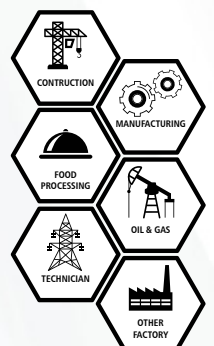
NEW
BUP91



SPECIFICATIONS

- | | | | |
|---------|--------------------------------------|---------------|--------------------------|
| COLORS | : BROWN / BLACK | INLYSOLE | : PU - PL PAKALOLO BOOTS |
| UPPER | : COW FULL GRAIN LEATHER+TEXTILE+TPR | LINNING | : TEXTILE |
| INSOLE | : SMART INSOLE SOFT IU INJECTION | SAFETY TOECAP | : COMPOSITE |
| OUTSOLE | : POLY URETHANE / PU | FEATURE | : ZIPPER |

SECTOR:



PRODUCT & FEATURES

PREMIUM

NEW
BUP95



NEW
BUP95

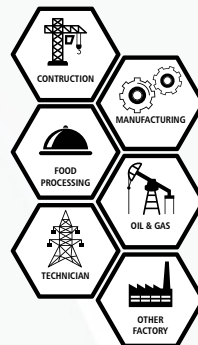


SPECIFICATIONS

COLORS : BROWN / BLACK
 UPPER : COW FULL GRAIN LEATHER+TEXTILE+TPR
 INSOLE : SMART INSOLE SOFT IU INJECTION
 OUTSOLE : POLY URETHANE / PU

INLYSOLE : PU - PL PAKALOLO BOOTS
 LINNING : TEXTILE
 SAFETY TOECAP : COMPOSITE

SECTOR:



PREMIUM

NEW
BUP97



NEW
BUP97

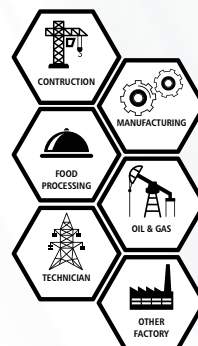


SPECIFICATIONS

COLORS : BROWN / BLACK
 UPPER : COW FULL GRAIN LEATHER+TEXTILE+TPR
 INSOLE : SMART INSOLE SOFT IU INJECTION
 OUTSOLE : POLY URETHANE / PU

INLYSOLE : PU - PL PAKALOLO BOOTS
 LINNING : TEXTILE
 SAFETY TOECAP : COMPOSITE

SECTOR:



SIZE CORRELATION (MEN'S)

UK 4 4.5 5 5.5 6.5 7.5 8 9 9.5 10.5

UER 36 37 38 39 40 41 42 43 44 45

SIZE CORRELATION (WOMEN'S)

UK 2.5 3.5 4 5 6 6.5 7.5

UER 35 36 37 38 39 40 41